

Complesso via Lamarmora Teulada - Sardegna



Contatto Italia: Lidia Verdesca Manca
0039 3472639553

Contatto Svizzera: Sergio Verdesca
0041 (0)79 332 85 86

E-Mail: s.verdesca@bluewin.ch

Vendiamo 6 appartamenti belli e funzionali da 3 a 5 vani (da 55mq a 105mq), vuoti, semi o arredati a solo 5 km dal mare. **Compreso posto auto o garage.**

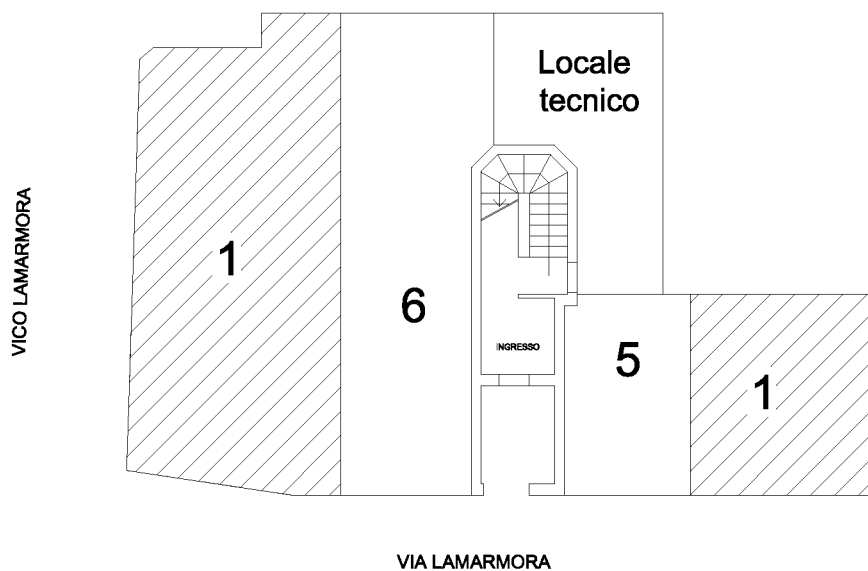
Gli appartamenti sono molto luminosi, con spazi interni belli e funzionali, con sala e soggiorno generosi. Tutti gli appartamenti con terrazzo, loggia o con piccolo balcone per vivere le belle serate in terrazza accompagnate da una vista rilassante e atmosfera soft.

Complesso Via Lamarmora

Luogo: I-09019 Teulada (Sardegna)



APPARTAMENTO 1

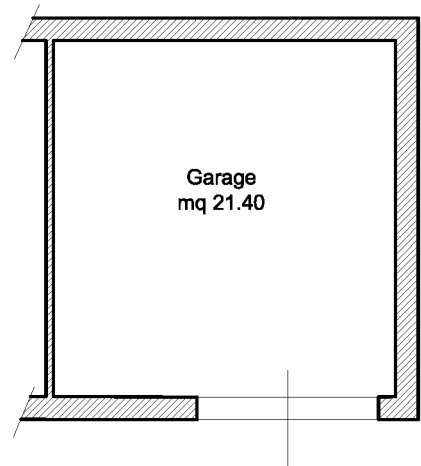
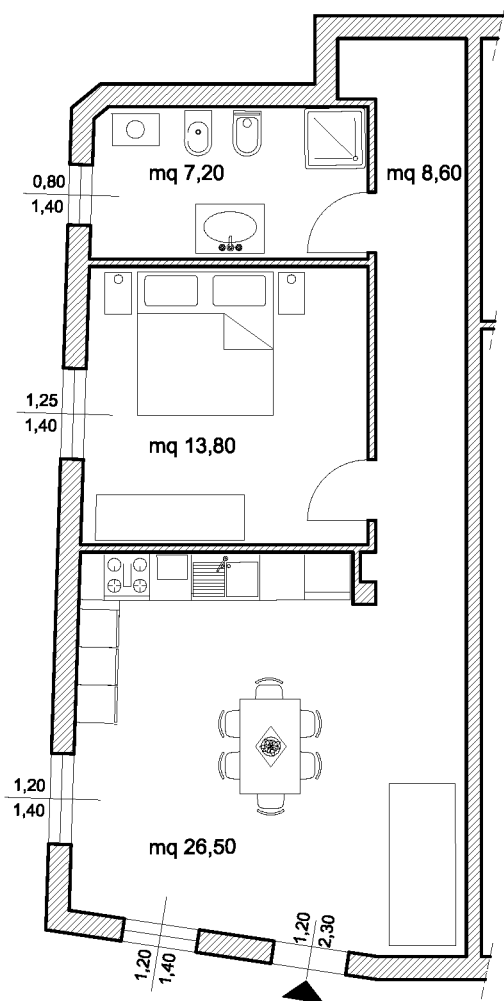


Piano seminterrato

salone mq 26.50;
corridoio mq 8.60;
letto mq 13.80;
bagno mq 7.20;
garage mq 21.40

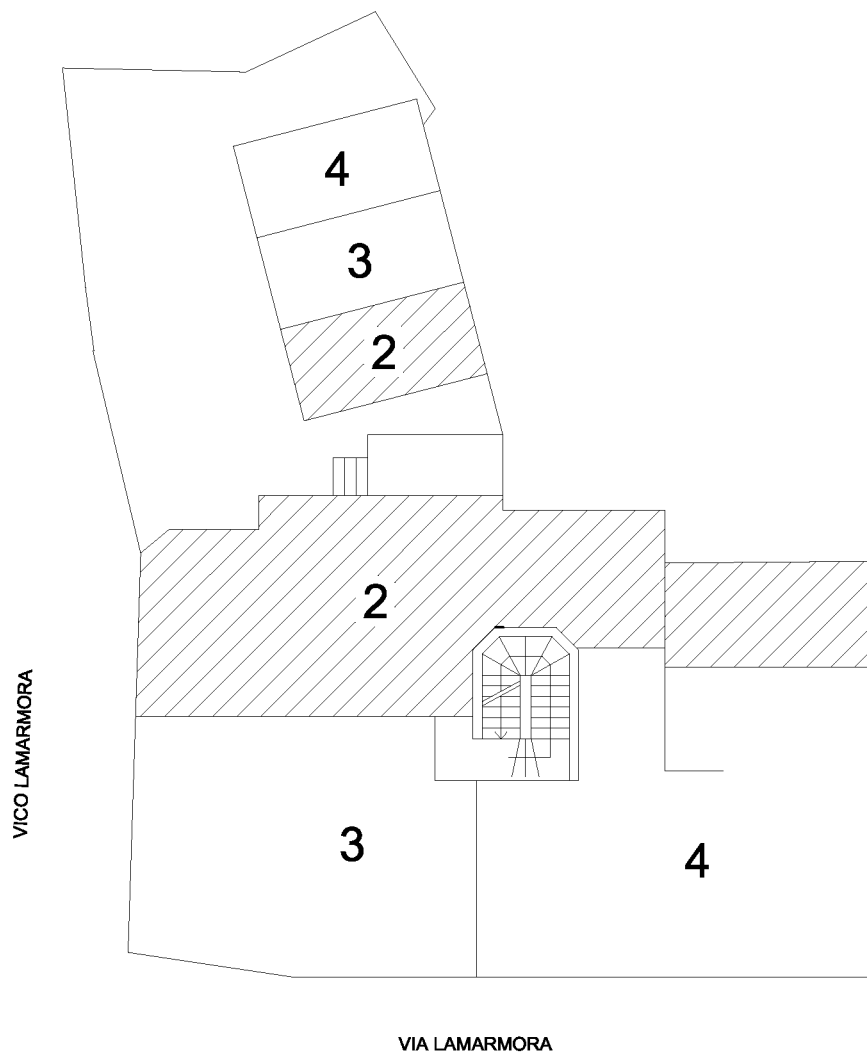
TOTALE S.U. mq 56.10

Piano seminterrato



Scala 1:100

APPARTAMENTO 2

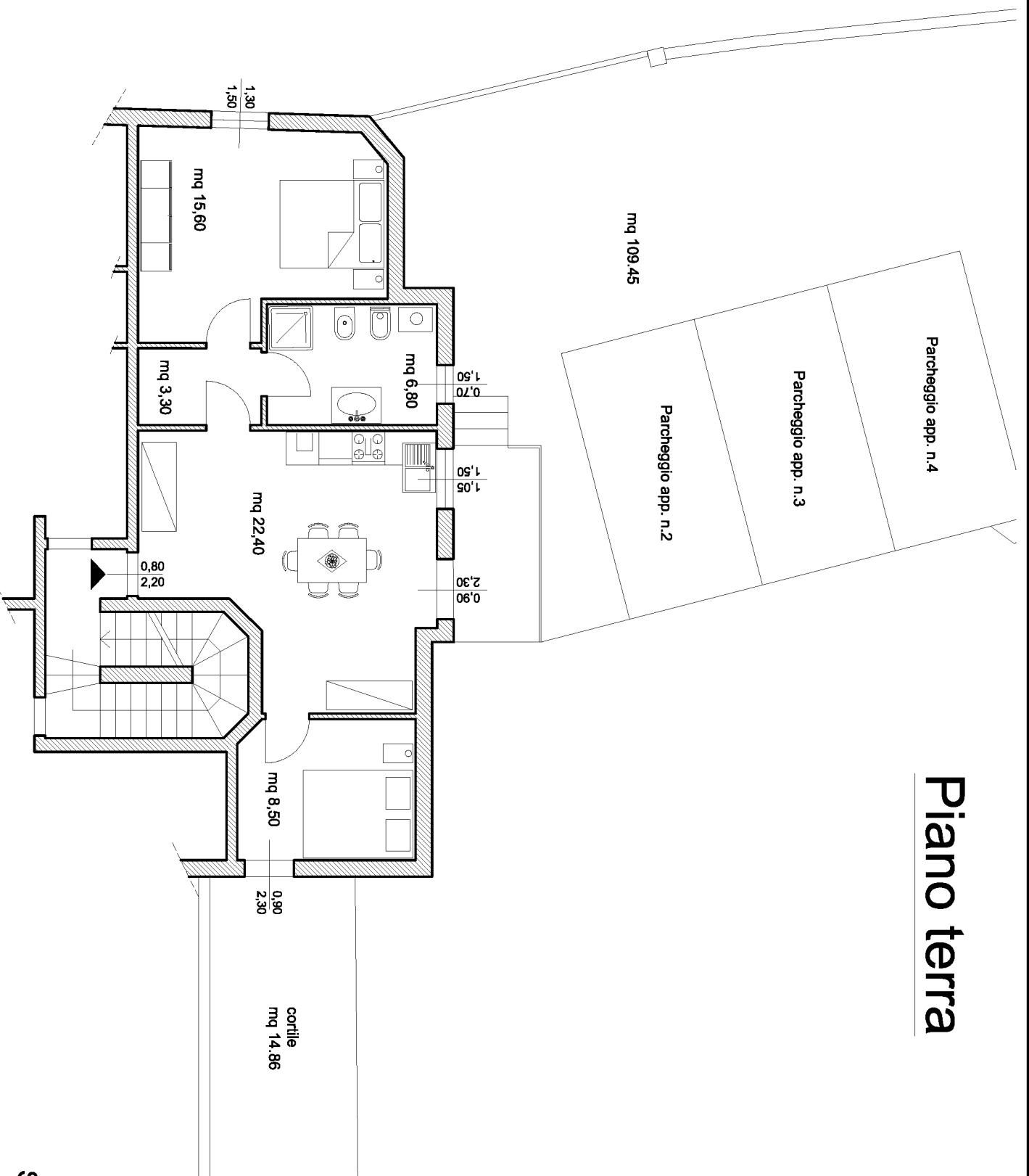


Piano terra

salone mq 22.40;
letto 1 mq 8.50;
letto 2 mq 15.60;
disimpegno mq 3.30;
bagno mq 6.80;

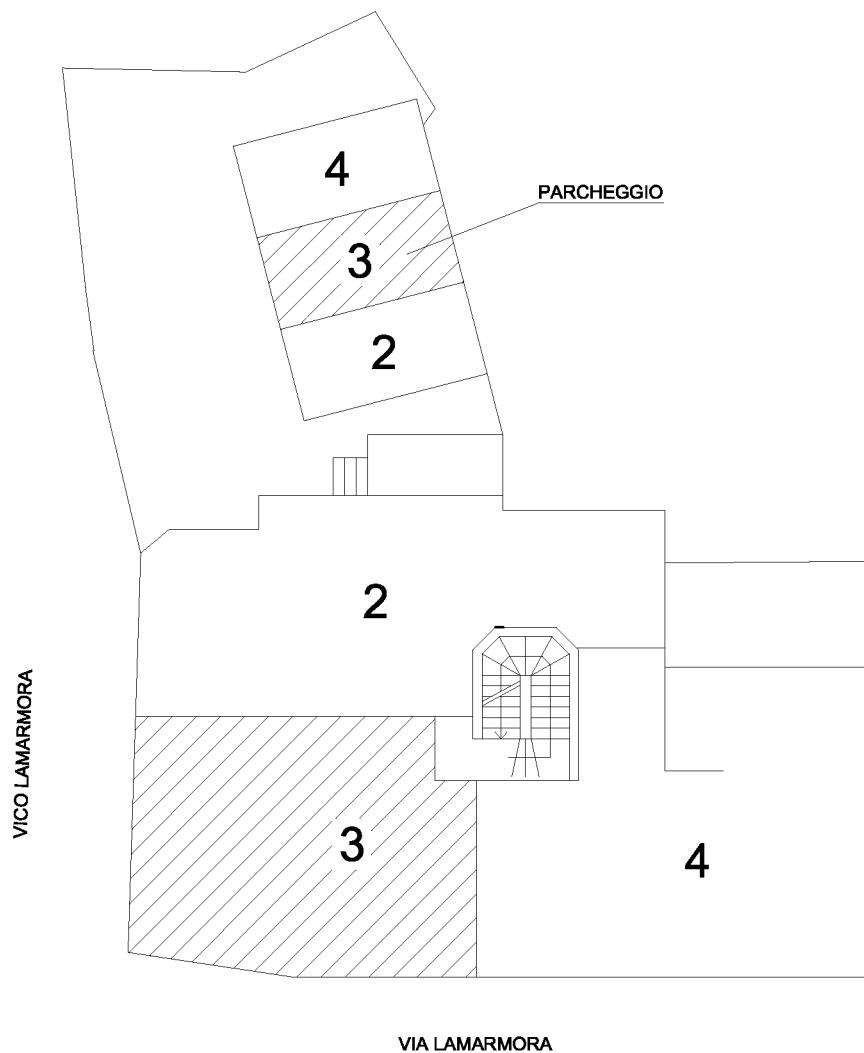
TOTALE S.U. mq 56.60

Piano terra



Scala 1:100

APPARTAMENTO 3

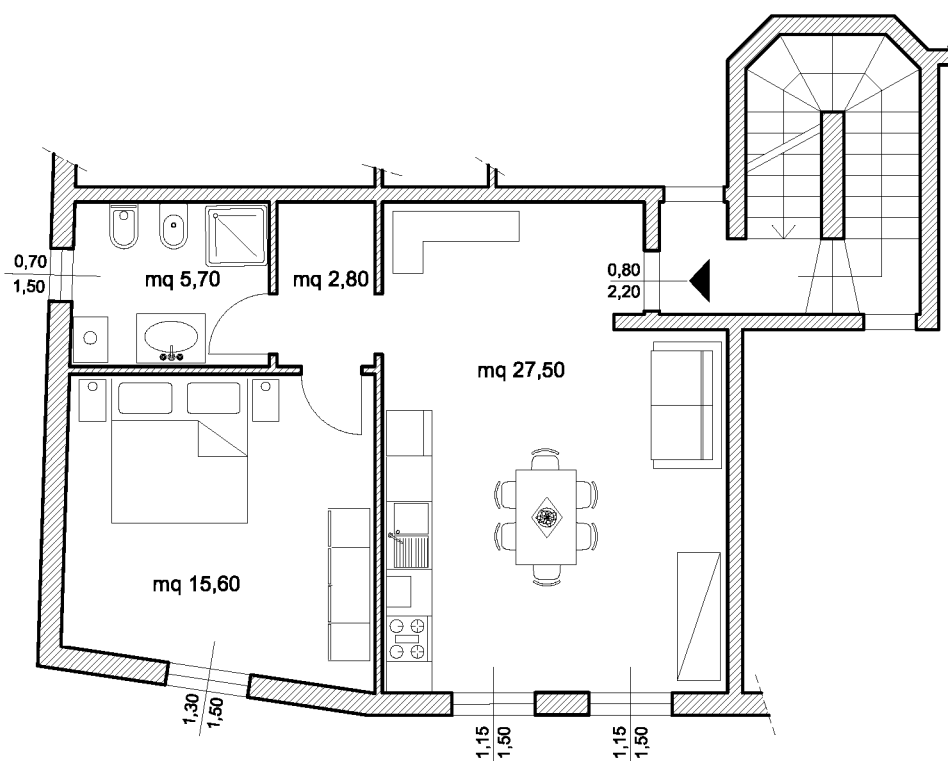


Piano terra

salone mq 27.50;
disimpegno mq 2.80;
letto mq 15.60;
bagno mq 5.70;

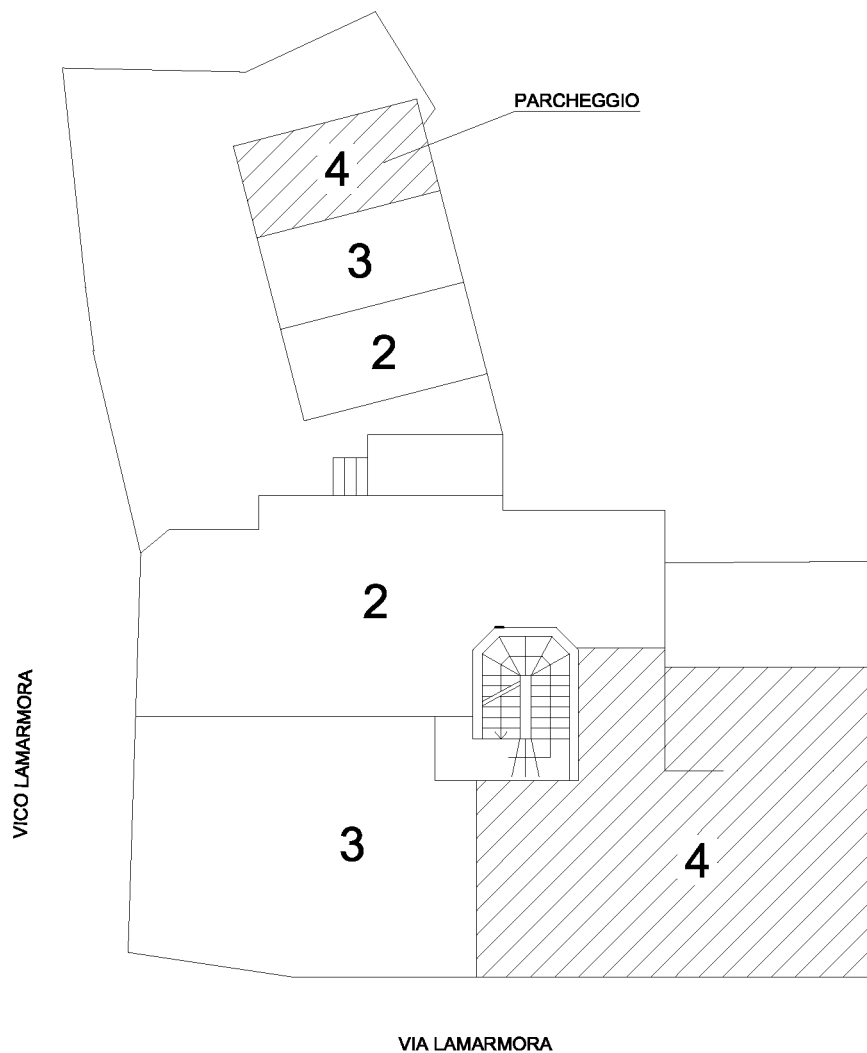
TOTALE S.U. mq 51.60

Piano terra



Scala 1:100

APPARTAMENTO 4

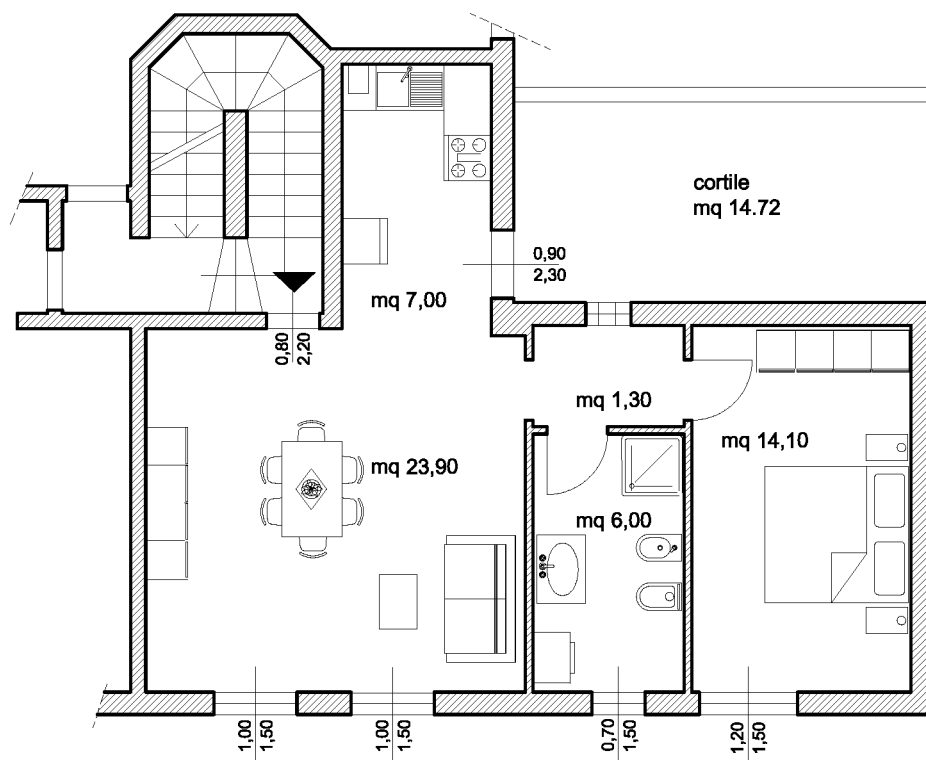


Piano terra

salone mq 23.90;
angolo cottura mq 7.00;
disimpegno mq 1.30;
letto mq 14.10;
bagno mq 6.00;

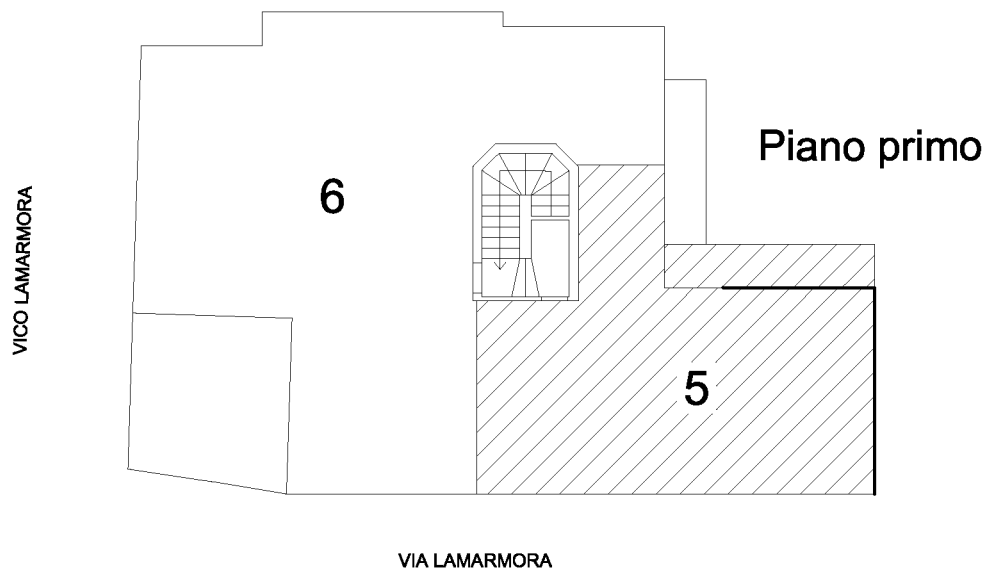
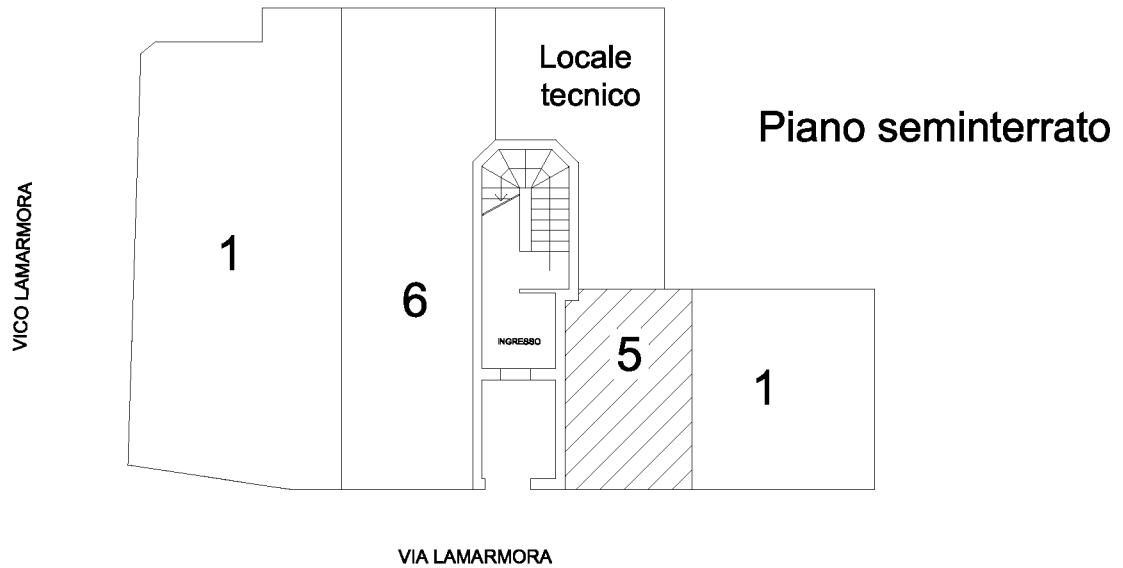
TOTALE S.U. mq 52.30

Piano terra



Scala 1:100

APPARTAMENTO 5



Piano seminterrato

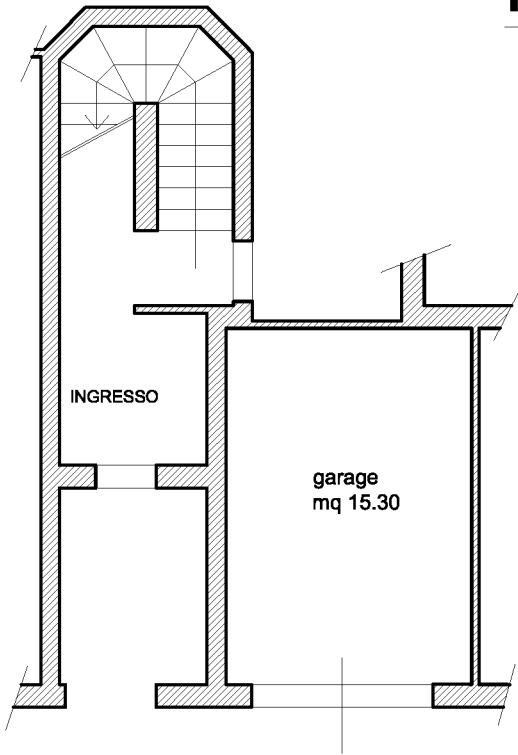
garage mq 15.30;

Piano primo

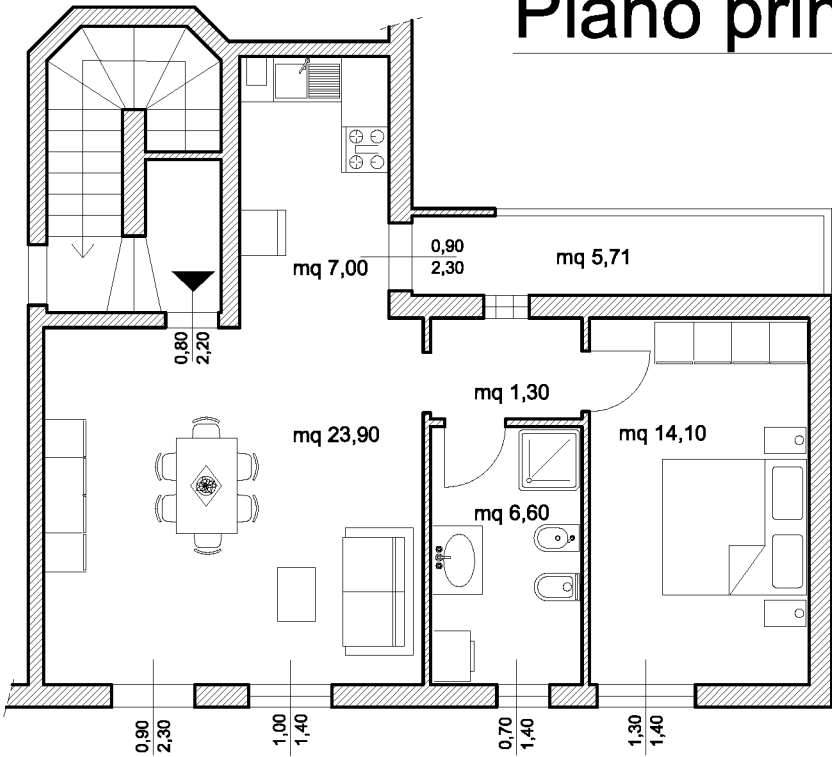
salone mq 23.90;
angolo cottura mq 7.00;
disimpegno mq 1.30;
letto mq 14.10;
bagno mq 6.00;
balcone mq 5.71

TOTALE S.U. mq 52.30

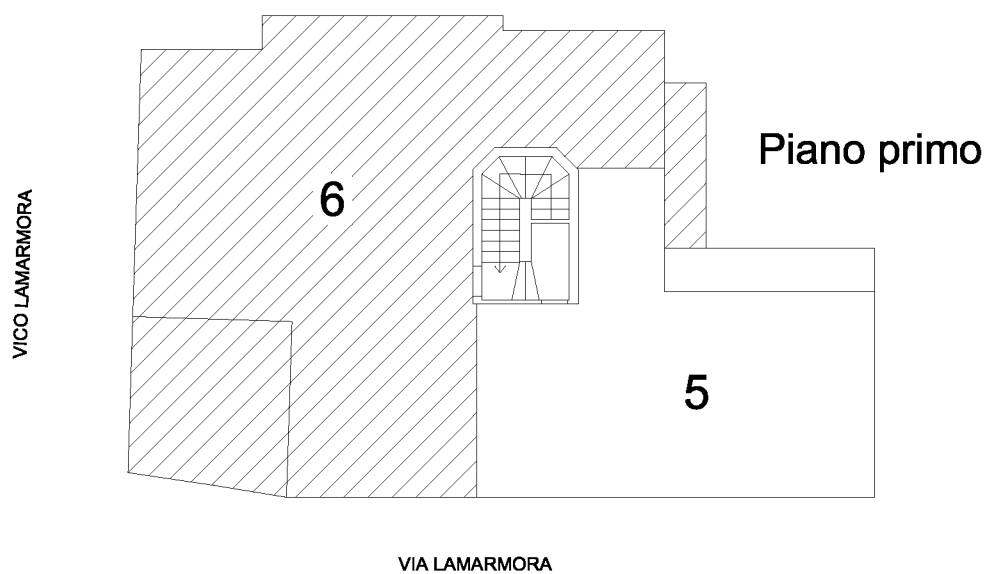
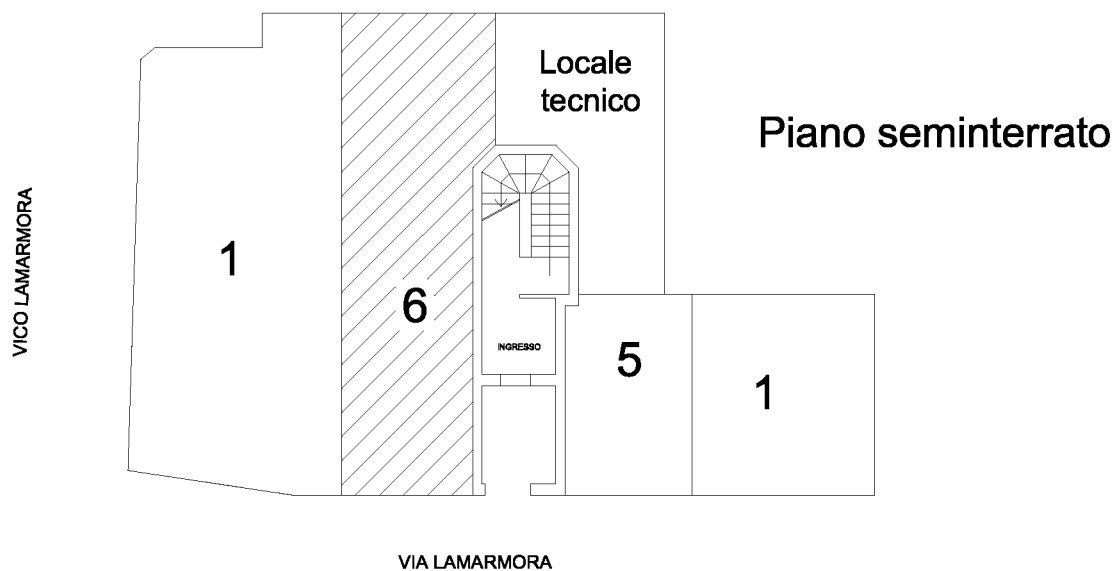
Piano seminterrato



Piano primo



APPARTAMENTO 6



Piano seminterrato

garage mq 27.90;
cantina mq 14.64;

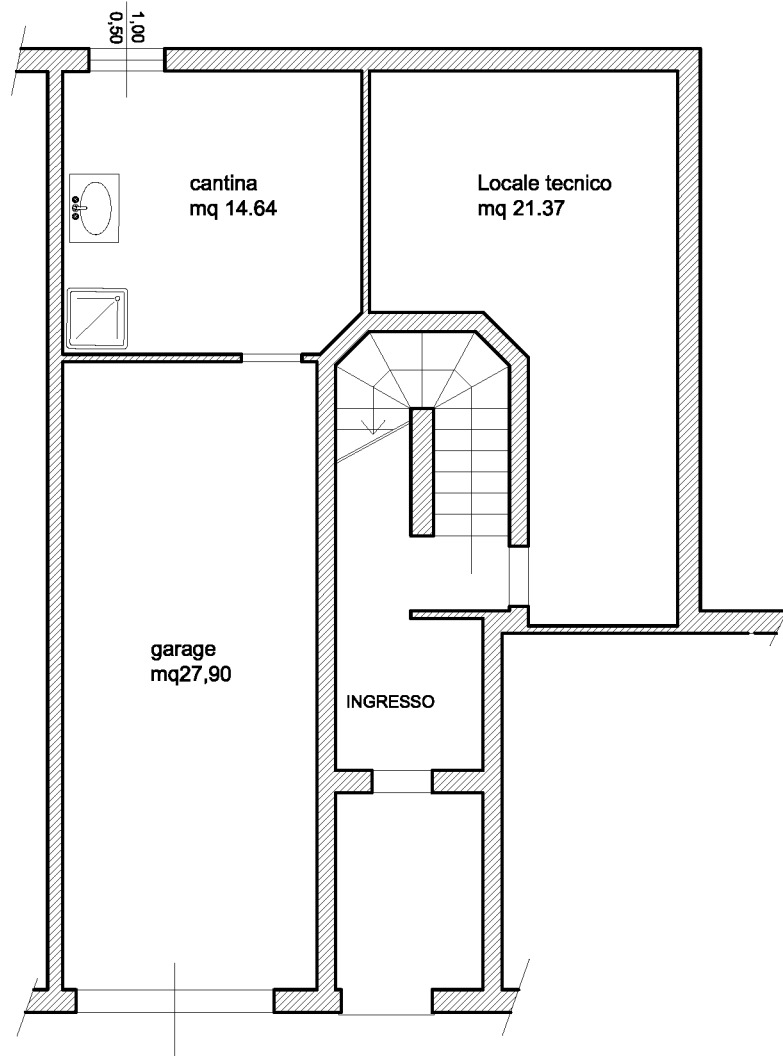
Piano primo

salone mq 43.70;
disimpegno mq 1.90;
letto1 mq 12.60;
bagno1 mq 7.30;

letto2 mq 14.20;
bagno2 mq 10.40;
balcone mq 4.26;
veranda mq 16.10.

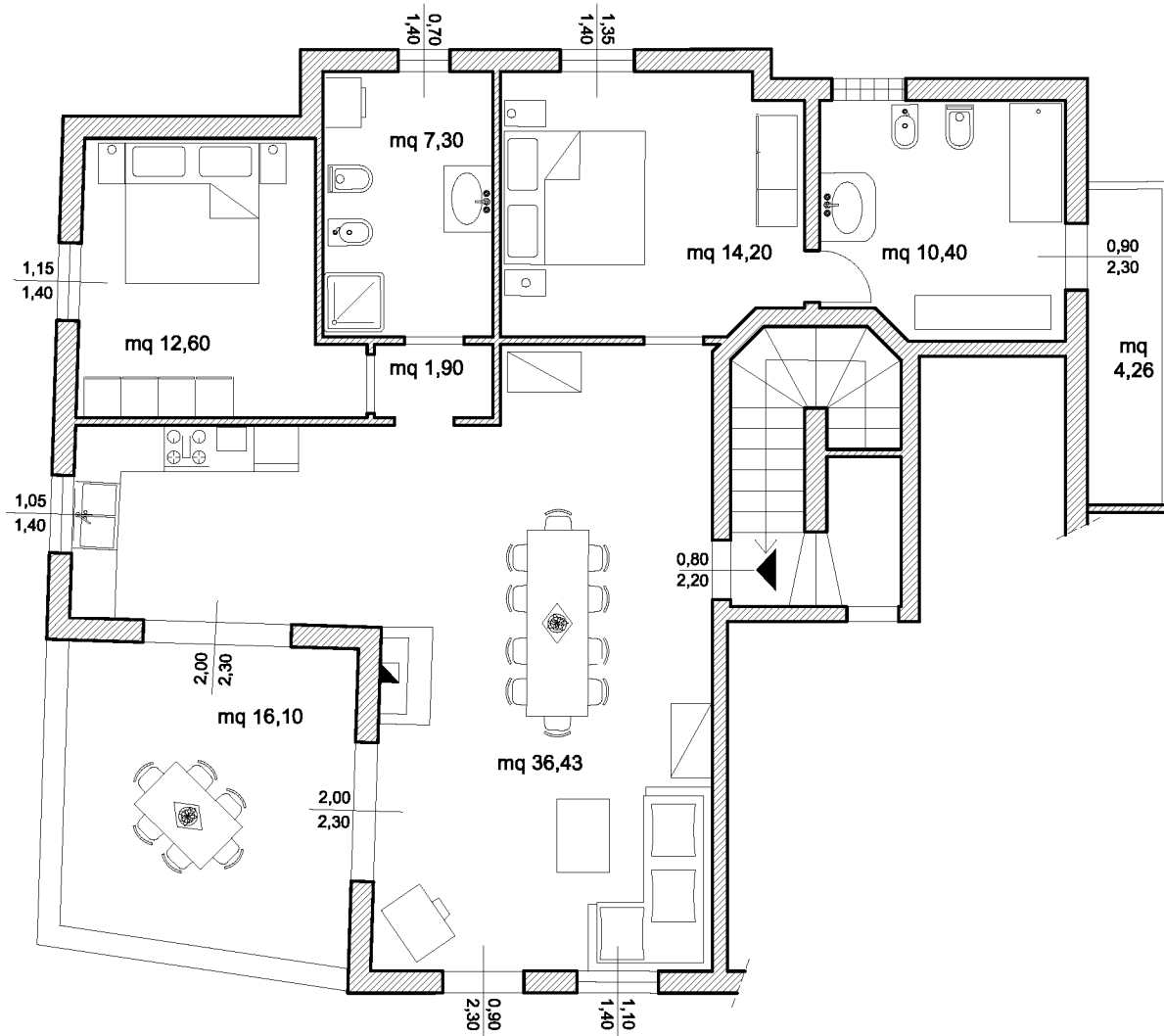
TOTALE S.U. mq 90.10

Piano seminterrato



Scala 1:100

Piano primo



Scala 1:100









